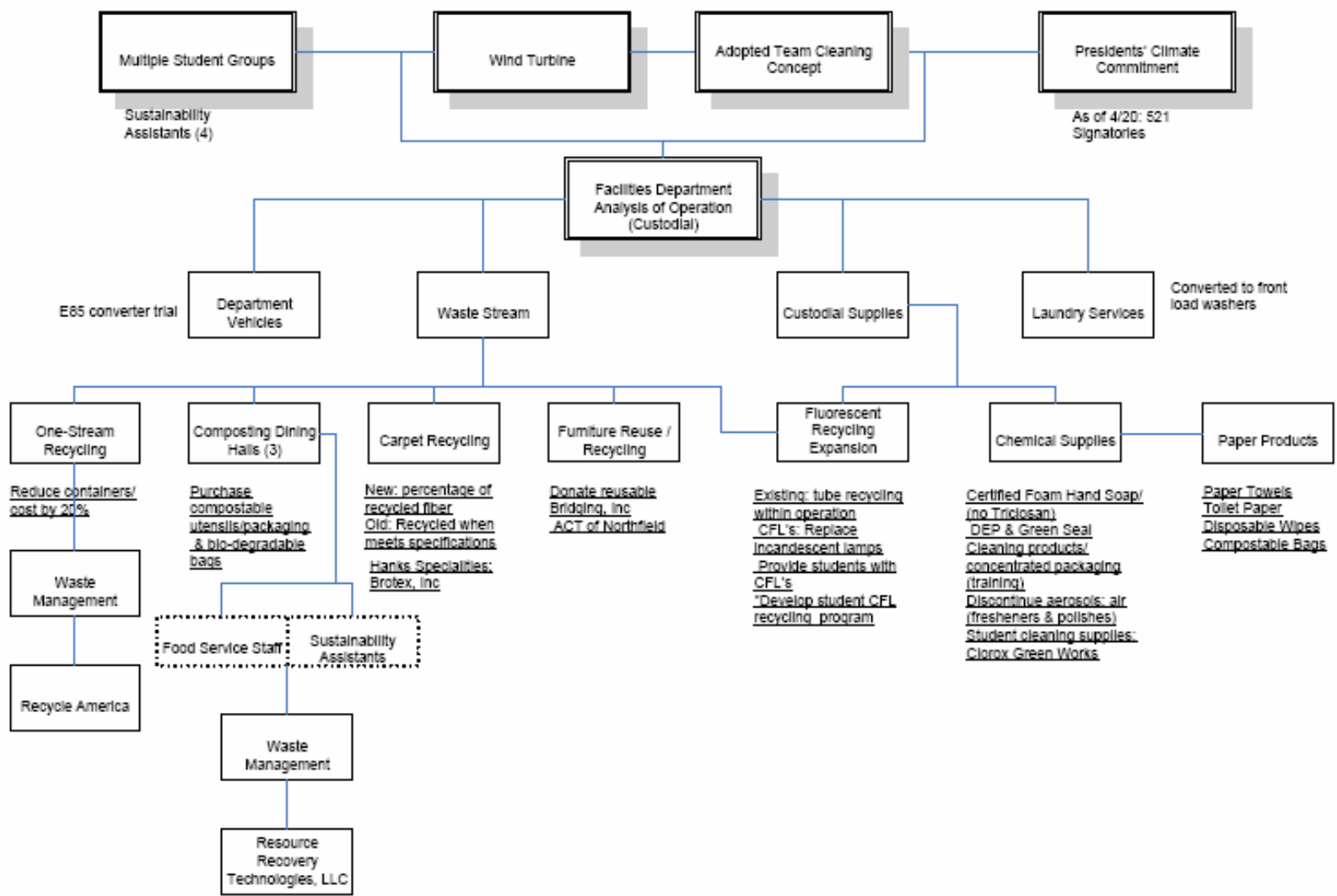


The background of the slide is a photograph of a bright blue sky with wispy white clouds at the top, transitioning into a deep blue body of water with gentle ripples at the bottom. The text is centered in white with a thin black outline.

Carleton College
Custodial Operations
Sustainability Initiatives

2008



Multiple Student Groups

Sustainability Assistants (4)

Wind Turbine

Adopted Team Cleaning Concept

Presidents' Climate Commitment

As of 4/20: 521 Signatories

Facilities Department Analysis of Operation (Custodial)

E85 converter trial

Department Vehicles

Waste Stream

Custodial Supplies

Laundry Services

Converted to front load washers

One-Stream Recycling

Reduce containers/ cost by 20%

Waste Management

Recycle America

Composting Dining Halls (3)

Purchase compostable utensils/packaging & bio-degradable bags

Food Service Staff

Sustainability Assistants

Waste Management

Resource Recovery Technologies, LLC

Carpet Recycling

New: percentage of recycled fiber
Old: Recycled when meets specifications
Hanks Specialties: Brotex, Inc

Furniture Reuse / Recycling

Donate reusable Bridging, Inc ACT of Northfield

Fluorescent Recycling Expansion

Existing: tube recycling within operation
CFL's: Replace Incandescent lamps
Provide students with CFL's
*Develop student CFL recycling program

Chemical Supplies

Certified Foam Hand Soap (no Triclosan)
DEP & Green Seal Cleaning products/ concentrated packaging (training)
Discontinue aerosols: air fresheners & polishes
Student cleaning supplies: Clorox Green Works

Paper Products

Paper Towels Toilet Paper Disposable Wipes Compostable Bags

Waste Stream

- One-Stream Recycling (single-stream, single-sort)
- Composting Program at Dining Halls (3)
- Carpet Recycling

One-Stream Recycling

- Design new look for program
 - Introduction posters
 - Design new stickers for interior & exterior containers
 - Interior & exterior color coded containers
- Website advertising
- Carletonian (student) advertising
- Currently@Carleton (staff) advertising
- Table tents in dining hall







RECYCLE
IN THIS CONTAINER:

- ALL PAPER & CARDBOARD
- GLASS BOTTLES & JARS
- ALUMINUM & METAL CANS
- PLASTIC CONTAINERS

DO NOT put the following materials in recycling bins:
Liquids • Food Waste • Waxed Paper • Fabric • Wood • Styrofoam
Cartleton College Cares About Our Future • Questions? Call 501-448-4923
REDUCE TRASH . . . RECYCLE! • Thank you for recycling!

Composting Program

- Create slogan and specific look for program (Publications Dept.)
- Purchase new interior color coded containers
- Utilize Sustainability Assistants for promoting program with residents
- Website advertising
- Carletonian (student) advertising
- Currently@Carleton (staff) advertising
- Table tents in dining halls
- Educate the Food Service staff





COMPOSTABLES

All Food

All Paper

Food Containers

Utensils

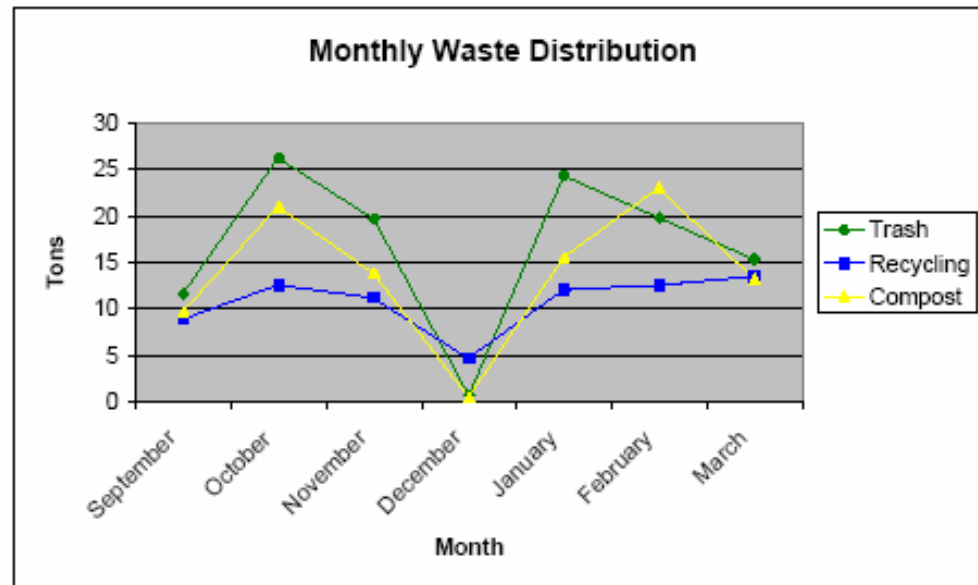
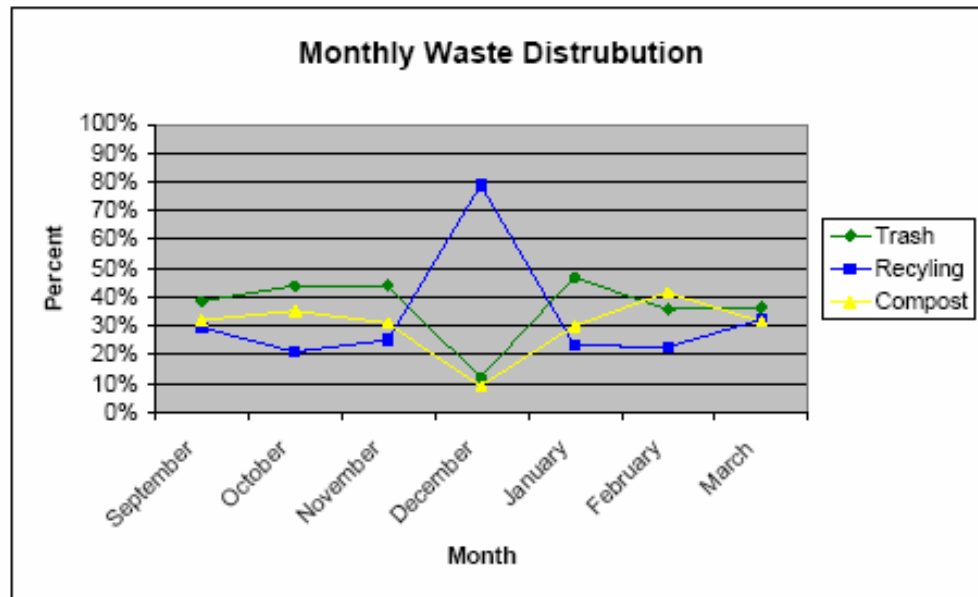




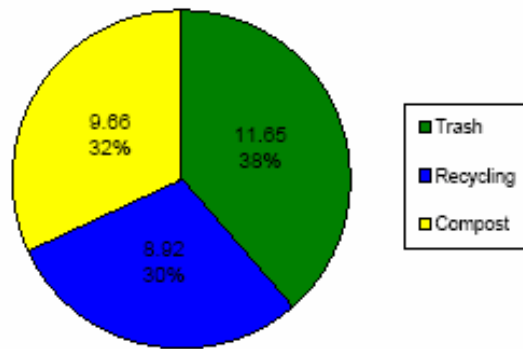




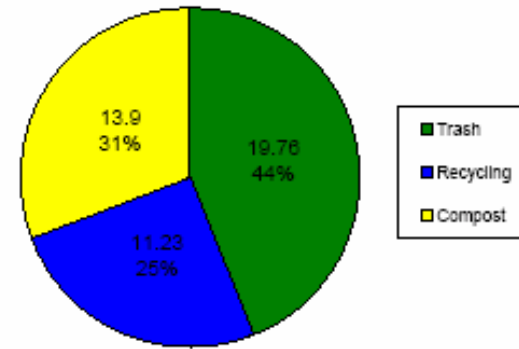




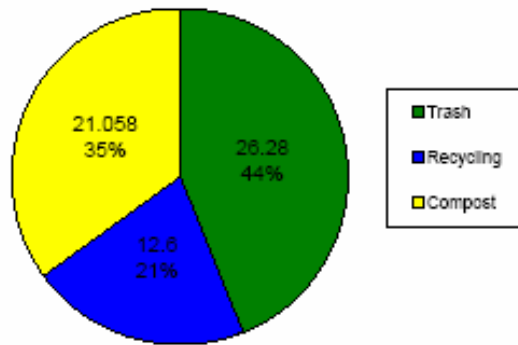
Waste Distribution in September (in tons)



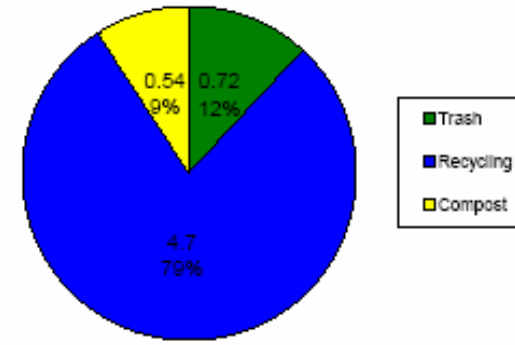
Waste Distribution in November (in tons)



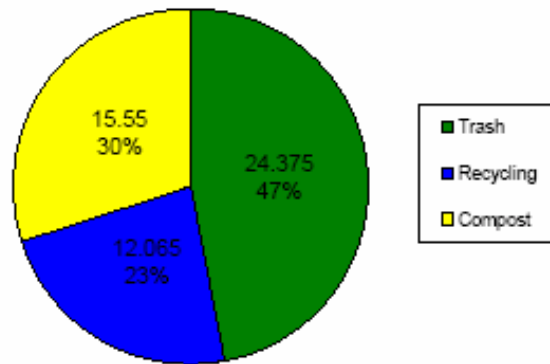
Waste Distribution in October (in tons)



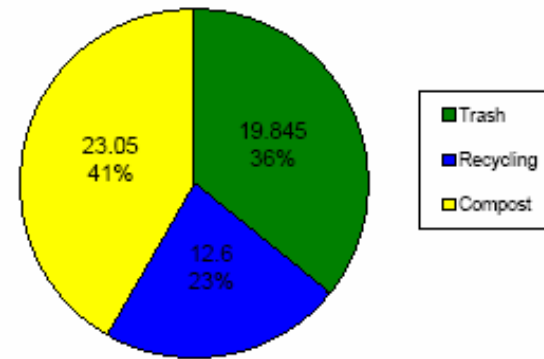
Waste Distribution in December (in tons)



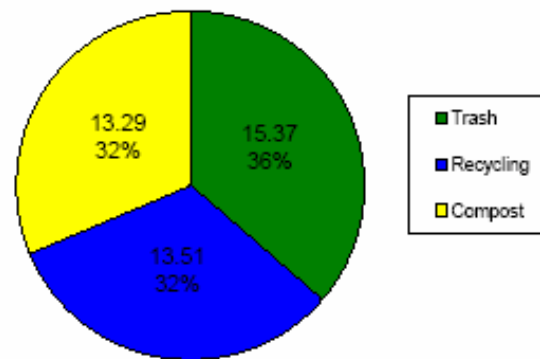
Waste Distribution in January (in tons)



Waste Distribution in February (in tons)



Waste Distribution in March (in tons)



Future Expansion of Compost

- Program includes:
 - Dorm Housing
 - Off-Campus Housing

Future efforts will include informational inserts of the programs in new student packets and data analysis of monthly waste stream totals on the website.

